

Technical Data Sheet

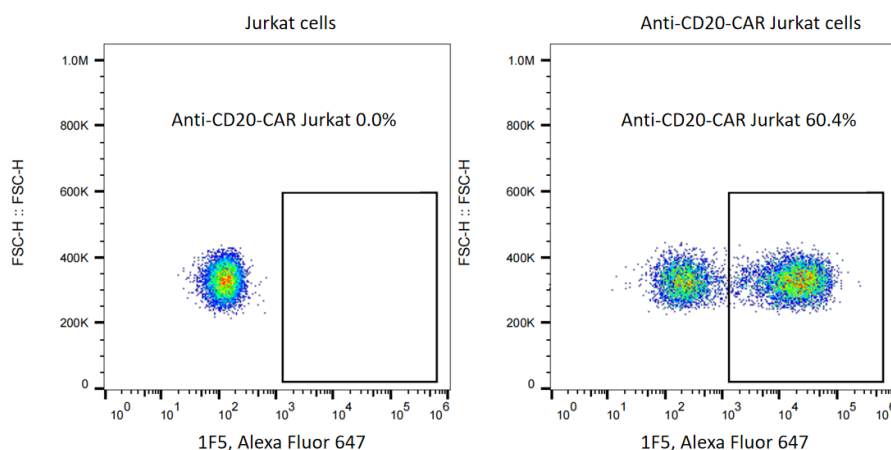
Rabbit Anti-Human 2C6 scFv Monoclonal Antibody

Product Information

Material Number:	202422
Size:	100 µg
Concentration:	2.0 mg/mL
Antibody Types:	Monoclonal
Isotype	Rabbit IgG, κ light chain
Clone:	1F5
Immunogen:	scFv region of a CD20-specific human mAb clone 2C6
Host Species:	Rabbit
Reactivity:	Human
Storage Buffer:	PBS, pH 7.4

Description

The rabbit monoclonal antibody 1F5 specifically binds to the scFv region of a CD20-specific human monoclonal antibody (mAb, clone 2C6). CD20 (cluster of differentiate 20) is a protein that is expressed on the surface of B cells, starting at the pre-B cell stage and also on mature B cells in the bone marrow and in the periphery. CD20 is not expressed on hematopoietic stem cells, pro-B cells, or normal plasma cells. The scFv region of 2C6 has been used to develop CD20-specific chimeric antigen receptor (CAR) T cells utilized in clinical trials.



Flow cytometric analysis of anti-CD20 CAR expression on human cell line Jurkat cells. Jurkat cells were transduced with lentivirus encoding anti-CD20 CAR and cultured for 7 days. 2×10^5 cells were stained for the expression of anti-CD20 CAR with Rabbit Anti-Human 2C6 scFv Monoclonal Antibody (Cat. No. 202422, right panel). Secondary staining was carried out with AffiniPure F(ab')₂ Fragment Goat anti-Rabbit IgG(H+L), Alexa Fluor 647 (Cat. No. 700002). Non-transduced Jurkat cells were used as a control for gating of CAR expression (left panel). Acquisition of >10,000 events was performed.

Preparation and Storage

Shipped at 2-8 °C. Store at 2-8 °C short term (4 weeks). Store at -80 °C in small aliquots for long term storage. Avoid freeze/thaw cycle. The monoclonal antibody was purified by Protein A.

Application Notes

Application

Flow cytometry

Routinely Tested

Product Notices

1. Since applications vary, each investigator should titrate the reagent to obtain optimal results.
2. Conditions: The information disclosed herein is not to be construed as a recommendation to use the above product in violation of any patents. BioSwan will not be held responsible for patent infringement or other violations that may occur with the use of our products. Purchase does not

BioSwan Laboratories, Co., Ltd. | Rm808, 781 Cailun Road, Shanghai, P.R.China
www.bioswan.com | info@bioswan.com | +86-21-50207339

include or carry any right to resell or transfer this product either as a stand-alone product or as a component of another product. Any use of this product other than the permitted use without the express written authorization of BioSwan Company is strictly prohibited.
For Research Use Only. Not for use in diagnostic or therapeutic procedures. Not for resales.
BioSwan, the BioSwan Logo and all other trademarks are property of BioSwan Laboratories, Co., Ltd..