

Technical Data Sheet

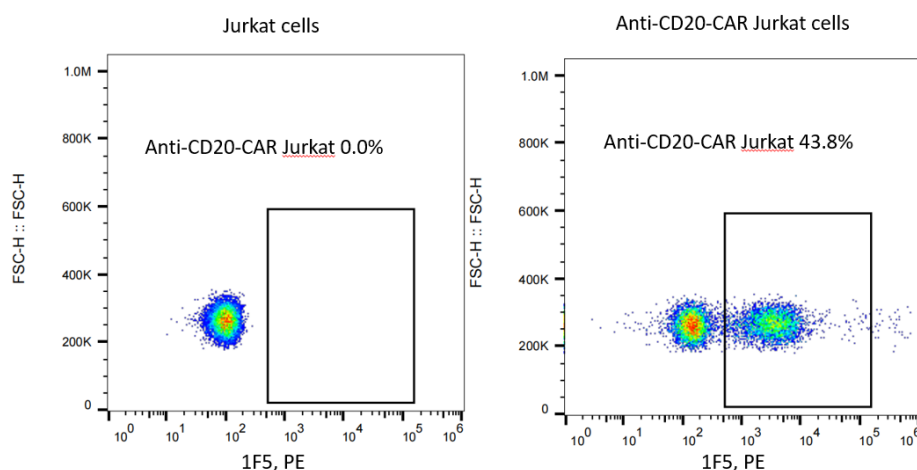
Rabbit Anti-Human 2C6 scFv Monoclonal Antibody, PE

Product Information

Material Number:	202406
Size:	100 Tests
Vol. per Test:	1 μ L
Antibody Types:	Monoclonal
Clone:	1F5
Immunogen:	scFv region of a CD20-specific Human mAb clone 2C6
Host Species:	Rabbit
Reactivity:	Human
Storage Buffer:	Aqueous buffered solution containing protein stabilizer and $\leq 0.05\%$ ProClin 300

Description

The rabbit monoclonal antibody 1F5 specifically binds to the scFv region of a CD20-specific human monoclonal antibody (mAb, clone 2C6). CD20 (cluster of differentiate 20) is a protein that is expressed on the surface of B cells, starting at the pre-B cell stage and also on mature B cells in the bone marrow and in the periphery. CD20 is not expressed on hematopoietic stem cells, pro-B cells, or normal plasma cells. The scFv region of 2C6 has been used to develop CD20-specific chimeric antigen receptor (CAR) T cells utilized in clinical trials.



Flow cytometric analysis of anti-CD20 CAR expression on human cell line Jurkat cells. Jurkat cells were transduced with lentivirus encoding anti-CD20 CAR and cultured for 7 days. 2×10^5 cells were stained for the expression of anti-CD20 CAR with Rabbit Anti-Human 2C6 scFv Monoclonal Antibody, PE (Cat. No. 202406, right panel). Non-transduced Jurkat cells were used as a control for gating of CAR expression (left panel).

Preparation and Storage

Store undiluted at 2-8°C and protected from prolonged exposure to light. Do not freeze.

The monoclonal antibody was purified by Protein A.

The antibody was conjugated with R-PE under optimum conditions.

Application Notes

Application

Flow cytometry

Routinely Tested

Product Notices

1. Since applications vary, each investigator should titrate the reagent to obtain optimal results.
2. Caution: Antibody solutions containing ProClin 300 should be handled with care. Do not take internally and avoid all contact with the skin, mucosa and eyes.
3. Conditions: The information disclosed herein is not to be construed as a recommendation to use the above product in violation of any patents. BioSwan will not be held responsible for patent infringement or other violations that may occur with the use of our products. Purchase does not

include or carry any right to resell or transfer this product either as a stand-alone product or as a component of another product. Any use of this product other than the permitted use without the express written authorization of BioSwan Company is strictly prohibited. For Research Use Only. Not for use in diagnostic or therapeutic procedures. Not for resales. BioSwan, the BioSwan Logo and all other trademarks are property of BioSwan Laboratories, Co., Ltd..

FCM Protocol

1. Harvest the cells and wash the cells once by FACS buffer (PBS containing 2% of BSA).
2. Count the cells number and the viability, aliquot up to 2×10^5 live cells into each tube. (Note: the cell viability must be $\geq 95\%$.)
3. Resuspend cells in 100 μ L of diluted Rabbit Anti-Human 2C6 scFv Monoclonal Antibody, PE (Cat. No. 202406, 1:100 diluted in FACS buffer) for 30 min at 4°C.
4. Wash the cells 3 times by FACS buffer and resuspend the cells in 200 μ L PBS per sample.
5. Transfer the cells into flow tube and analyze on Flow Cytometer. Acquisition of >10, 000 events is performed.